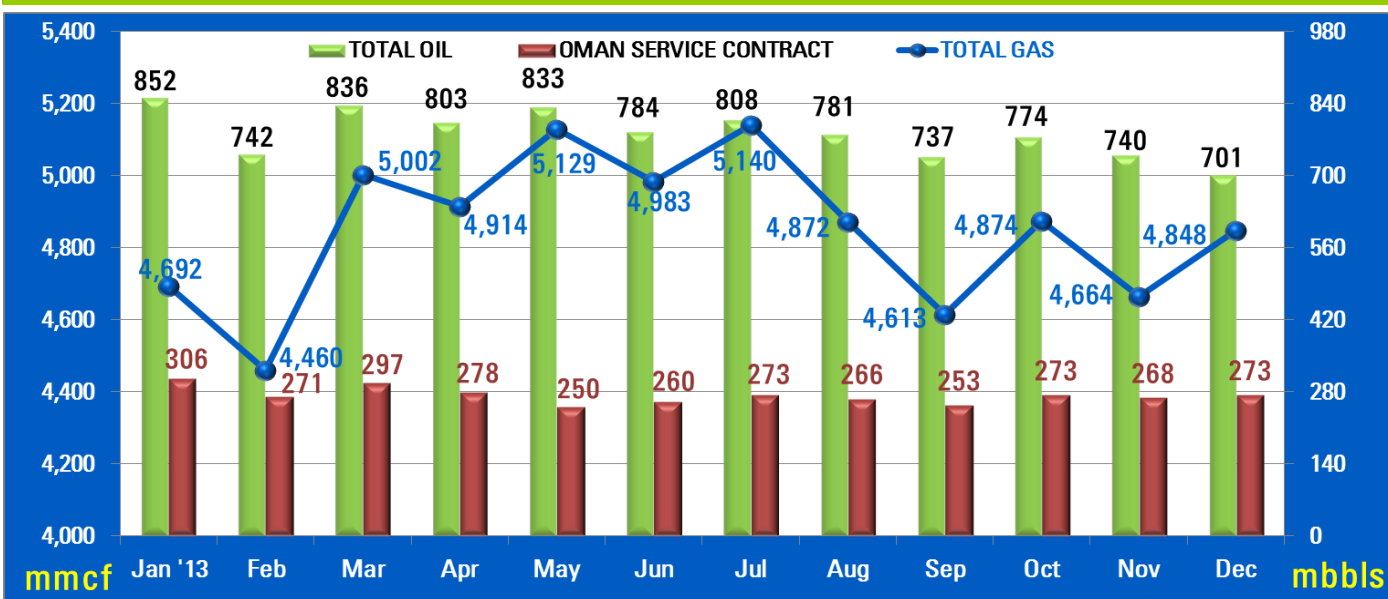


# PT Medco Energi Internasional Tbk. Monthly Newsletter

## Production Report Chart



### Corporate Updates :

- MedcoEnergi continued its exploration activities throughout 2013 where a total of five exploration wells are drilled domestically namely Bajul Besar-1 in Simenggaris Block, East Kalimantan, Lagan Deep-1A in South & Central Sumatra Block, Arung-1 also in South & Central Sumatra Block, Pastel-1 in Tarakan Block, East Kalimantan and Salina-1 in Rimau Block, South Sumatra.
- Overseas MedcoEnergi also drilled one appraisal well P2-047/02 in Libya Block 47, while in Yemen Block 9 which is operated by MedcoEnergi's partner CalValley Petroleum a total of three appraisal wells are drilled in Ras Nowmah South-1, Ras Nowmah North-1 and Sueda-1.
- With these exploration activities the Company aims to maintain its reserve replacement ratio (RRR) above 1x, as previously during the past 3 years MedcoEnergi has achieved RRR at an average of above 2x.

PT MedcoEnergi Internasional Tbk  
Investor Relations Department

The Energy 52nd Floor  
SCBD Lot 11A

Jl. Jendral Sudirman , Jakarta 12190

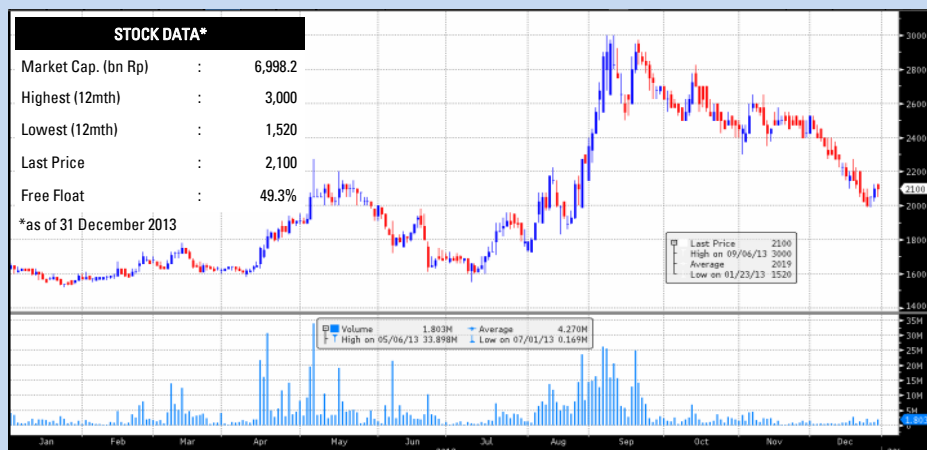
Tel: (62-21) 2995 3000

Fax: (62-21) 2995 3001

Email:

investor.relations@medcoenergi.com

Website: www.medcoenergi.com





# Monthly Newsletter

## Production Report Table

Oil Production (mbbls)	FY '12	Jan	Feb	Mar	Apr	May	Jun	Jul	Aug	Sep	Oct	Nov	Dec	YTD '13
Rimau	5,466.2	430.6	380.1	416.5	399.2	406.0	389.7	395.6	384.0	367.5	382.5	363.7	379.8	4,695.1
South & Central Sumatra	2,579.9	215.9	183.0	211.6	207.9	216.3	203.5	217.3	204.9	201.8	205.9	192.1	145.9	2,406.2
Tarakan	990.1	65.2	65.1	68.4	61.0	67.8	65.8	66.1	62.9	60.3	60.7	56.5	58.7	758.2
Sembakung	804.0	54.2	49.4	50.6	48.0	50.6	49.3	50.2	49.1	45.3	48.0	44.3	32.0	571.0
Bawean	474.3	26.3	12.7	34.0	33.6	33.6	23.7	22.8	25.3	8.9	20.4	25.8	26.6	293.0
Tiaka	134.1	9.3	8.1	8.8	8.4	8.4	7.7	8.0	8.5	9.6	14.0	13.2	14.3	118.3
USA	154.9	13.5	10.6	14.8	15.0	15.4	13.5	12.4	14.3	12.2	11.6	12.7	13.5	159.6
Yemen 9	378.6	37.2	33.2	31.8	29.4	35.4	31.2	35.2	31.8	31.5	31.7	31.7	30.2	390.3
<b>TOTAL OIL</b>	<b>10,982.2</b>	<b>852.1</b>	<b>742.2</b>	<b>836.4</b>	<b>802.6</b>	<b>833.4</b>	<b>784.4</b>	<b>807.6</b>	<b>780.8</b>	<b>737.1</b>	<b>774.7</b>	<b>740.0</b>	<b>701.0</b>	<b>9,391.7</b>
Gas Production (mmcf)	FY '12	Jan	Feb	Mar	Apr	May	Jun	Jul	Aug	Sep	Oct	Nov	Dec	YTD '13
South & Central Sumatra	49,522.4	3,689.0	3,487.0	3,853.0	3,847.0	3,985.5	3,832.0	3,965.5	3,760.9	3,428.7	3,667.3	3,599.4	3,793.9	44,909.2
Lematang	8,899.7	988.6	953.6	1,091.8	999.0	1,074.5	1,097.0	1,133.4	1,083.3	1,121.7	1,131.0	996.6	990.0	12,660.5
Tarakan	891.9	5.7	5.9	13.4	13.9	16.2	10.3	9.2	7.1	24.9	35.7	36.3	37.6	216.1
USA	543.0	8.3	13.9	43.8	53.6	53.2	43.3	32.3	20.4	38.1	40.2	31.7	26.7	405.5
<b>TOTAL GAS</b>	<b>59,857.1</b>	<b>4,691.6</b>	<b>4,460.4</b>	<b>5,002.0</b>	<b>4,913.5</b>	<b>5,129.4</b>	<b>4,982.5</b>	<b>5,140.4</b>	<b>4,871.7</b>	<b>4,613.3</b>	<b>4,874.2</b>	<b>4,664.0</b>	<b>4,848.2</b>	<b>58,191.3</b>
Service Contract (mbbls)	FY '12	Jan	Feb	Mar	Apr	May	Jun	Jul	Aug	Sep	Oct	Nov	Dec	YTD '13
Oman	3,821	305.5	270.5	297.1	278.1	250.1	259.9	273.2	265.7	253.3	272.9	267.6	272.9	3,266.7

## WTI, Brent, ICP and Realized Oil Price

